

THE IMPACT OF PLASTIC POLLUTION ON MARINE LIVES.



Aim

To determine the level of plastic pollution in the area

Research Question

How does plastic pollution affects coral reef health?



Method

Site selection

Lady Di

Matane Huva

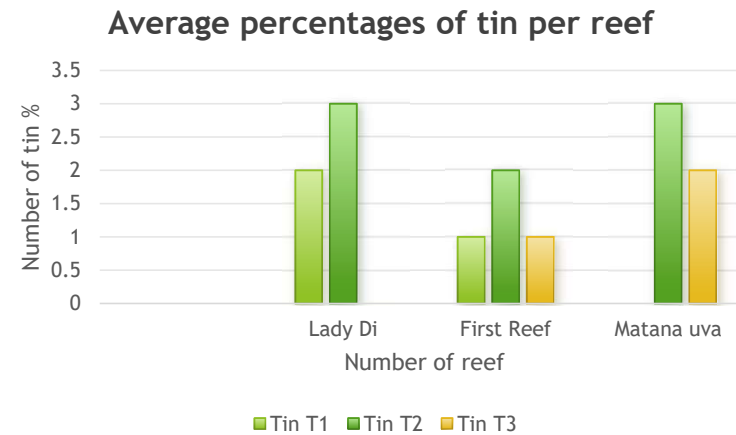
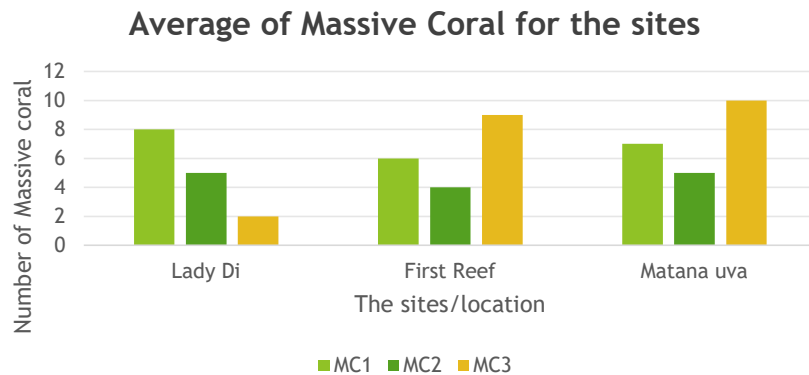
First Reef



Benthic for Massive coral and observation plastic

Result

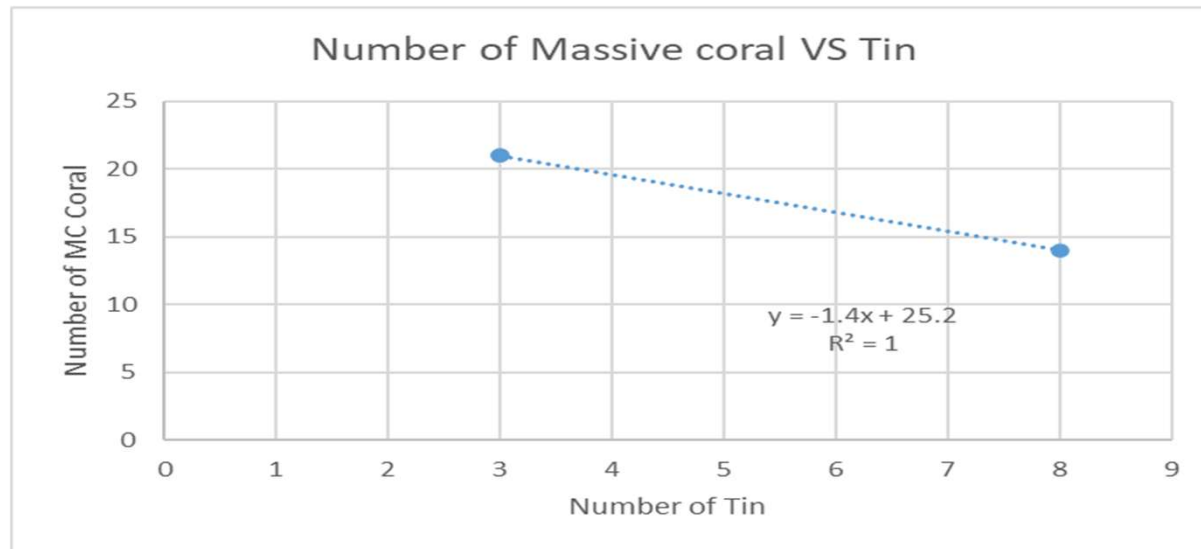
The two graphs represent the average for can drink (Tin) and massive coral



1st graph indicate that Matane Huva has large number of massive coral compared to First reef and Lady Di

2nd Graph represent the average percentages of plastics found at the three sites. Lady Di and Matane Huva has the similar average percentages which means there is lots of plastics found at the area while first reef has less plastic.

Diagram representing the correlation of Massive Coral and Tin sample



There is a relationship between these two variables, which are massive coral and tin. As one increases, the other decreases, based on the correlation value which is -1.

The negative response, which is the number of massive coral, increases as the tin value decreases.



END OF PRESENTATION
THANK YOU