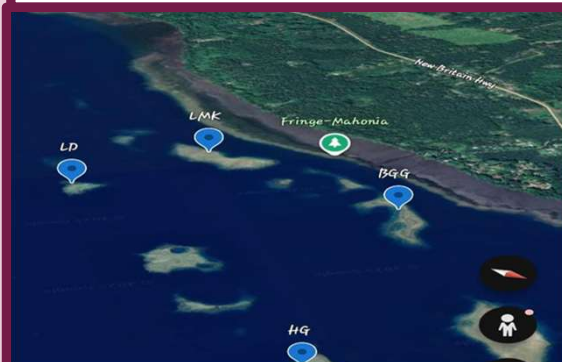


Assessment of current threats within the Kimbe Bay LMMAs - by Venessa

Aim: To find out how macroalgae cover and dead coral cover are influenced by both global threats like climate change, and local human activities.



Sites: Kimbe Bay LMMAs (HG, Matani Huva, BGG and Ladi Di)

Methods: Benthic survey

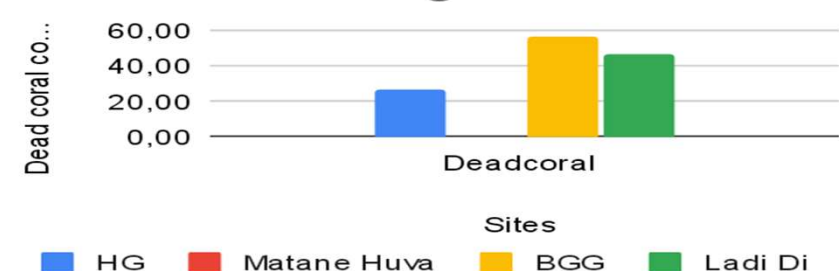
Research question: How do global threats affect macroalgae cover and dead coral cover?

Results: There is no significant correlation between macroalgae and dead coral cover, calculated across the four reef sites.

Macroalgae average



Dead coral average



Implication: In essence, Macroalgae cover and Dead coral cover are clear visual signs that Kimbe Bay reefs are struggling, facing threats beyond fishing activities etc. Demanding effort to improve water quality and combat Climate change to restore these vital ecosystems.